



Applied Chest Imaging Laboratory

Boston, Massachusetts. USA



BRIGHAM AND  
WOMEN'S HOSPITAL



HARVARD  
MEDICAL SCHOOL

# MIP Viewer

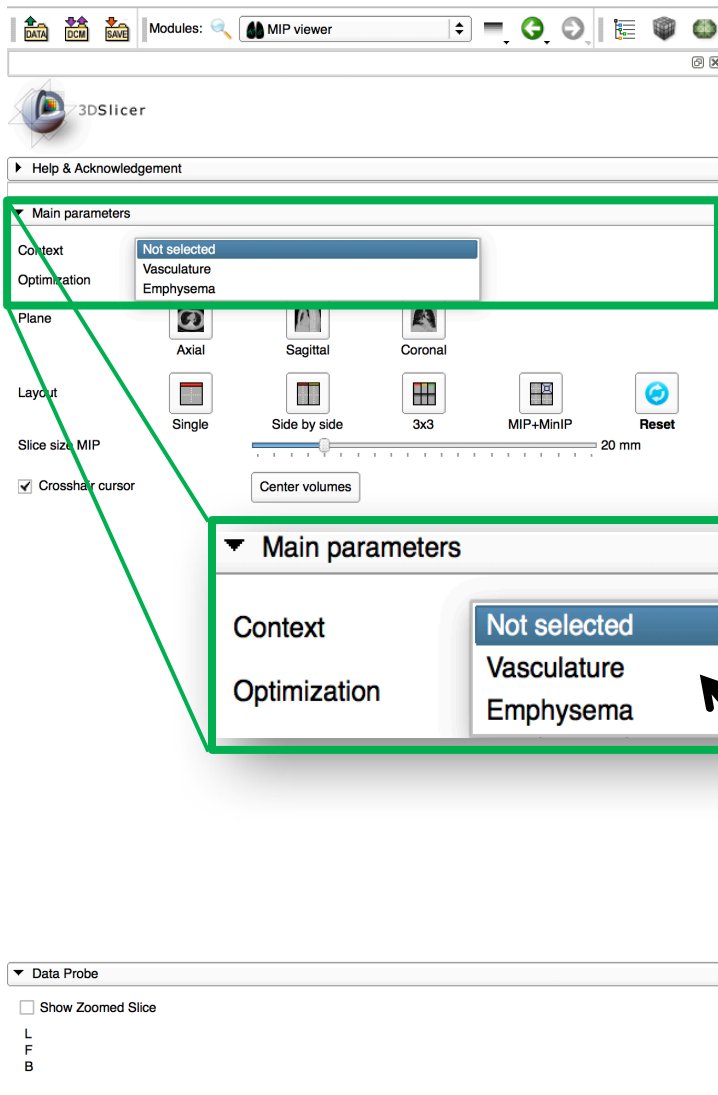
A Chest Imaging Platform Slicer Extension module

# Overview

- Goal: Implement some projection operations, such as:
  - MIP: Maximum intensity projection.
  - MinIP : Minimum intensity projection.
  - Median.



# MIP Viewer



## Main parameters

Context

Not selected

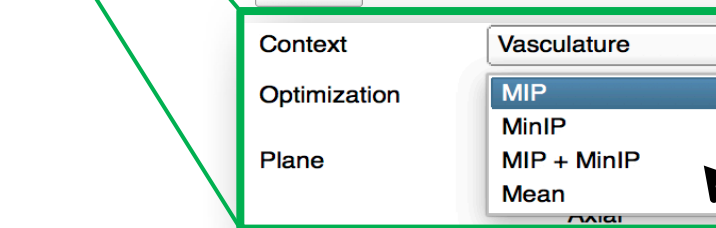
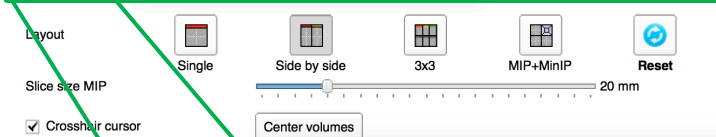
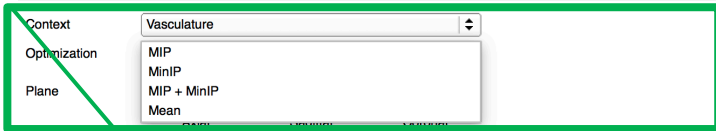
Optimization

Vasculature

Emphysema

1- Select between Vasculature and Emphysema in the context tab.

# MIP Viewer



2- Select the desired optimization.

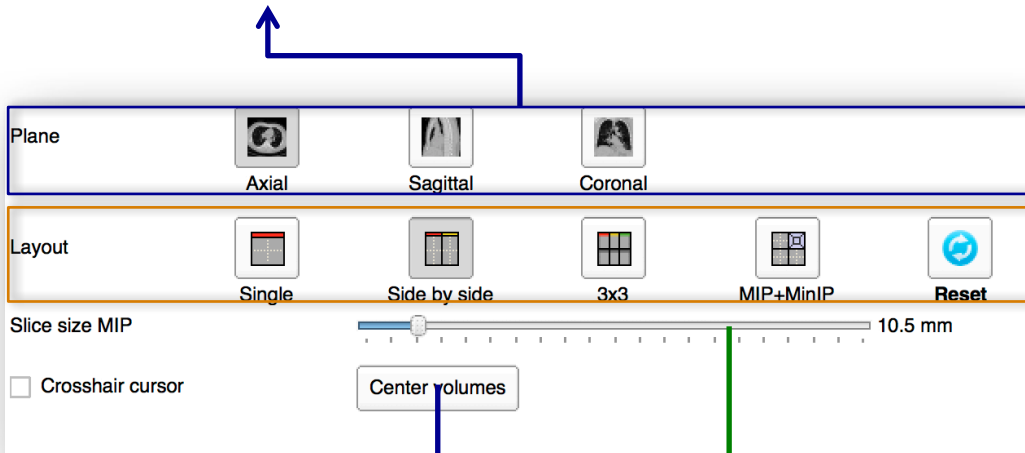
*Tip: available options are:*

- MIP: Maximum Intensity Projection
- MinIP: Minimum Intensity Projection
- MIP + MinIP : Both
- Mean

*Tip: the view will automatically change and show the axial view and the selected projection*

# MIP Viewer

3- Select the desired Plane.



4- Select the desired layout

*Tip: by default the program will show the "Side by Side"*

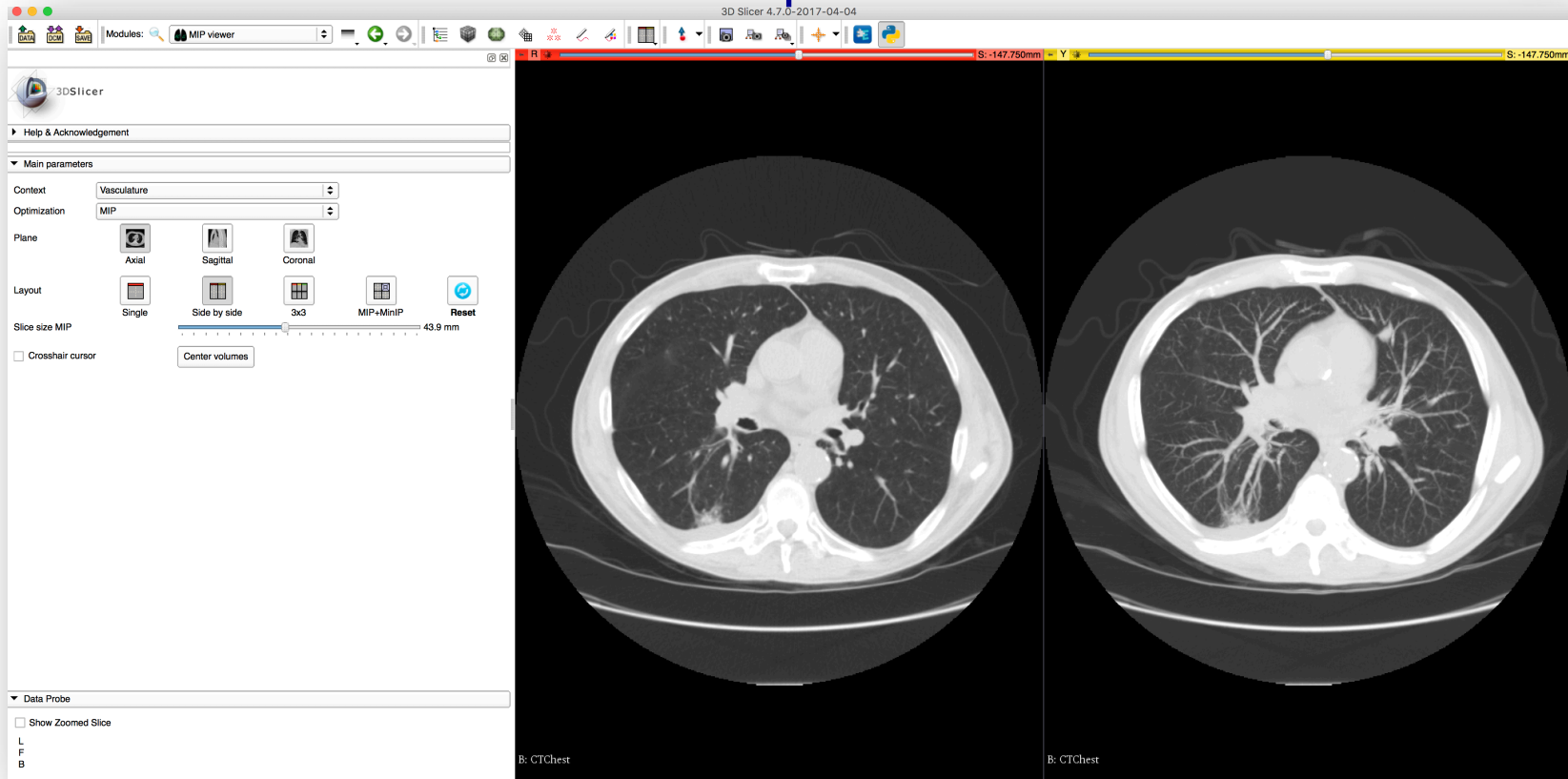
*Tip: Click "Reset" to delete configuration and restore initial layout*

If desired change the slice size of the MIP with the scroll

Click "Center volumes" to center the images on the screen

# MIP Viewer

Expected results



# MIP Viewer

- The MIP Viewer module is part of the Chest Imaging Platform extension for 3D Slicer ([www.chestimagingplatform.org](http://www.chestimagingplatform.org))
- This work is funded by the National Heart, Lung, And Blood Institute of the National Institutes of Health under Award Number R01HL116931. The content is solely the responsibility of the authors and does not necessarily represent the official views of the National Institutes of Health.
- Contributors:
  - *Jorge Onieva*
  - *Applied Chest Imaging Laboratory*
  - *Brigham and Women's Hospital*
  - *Harvard Medical School*

